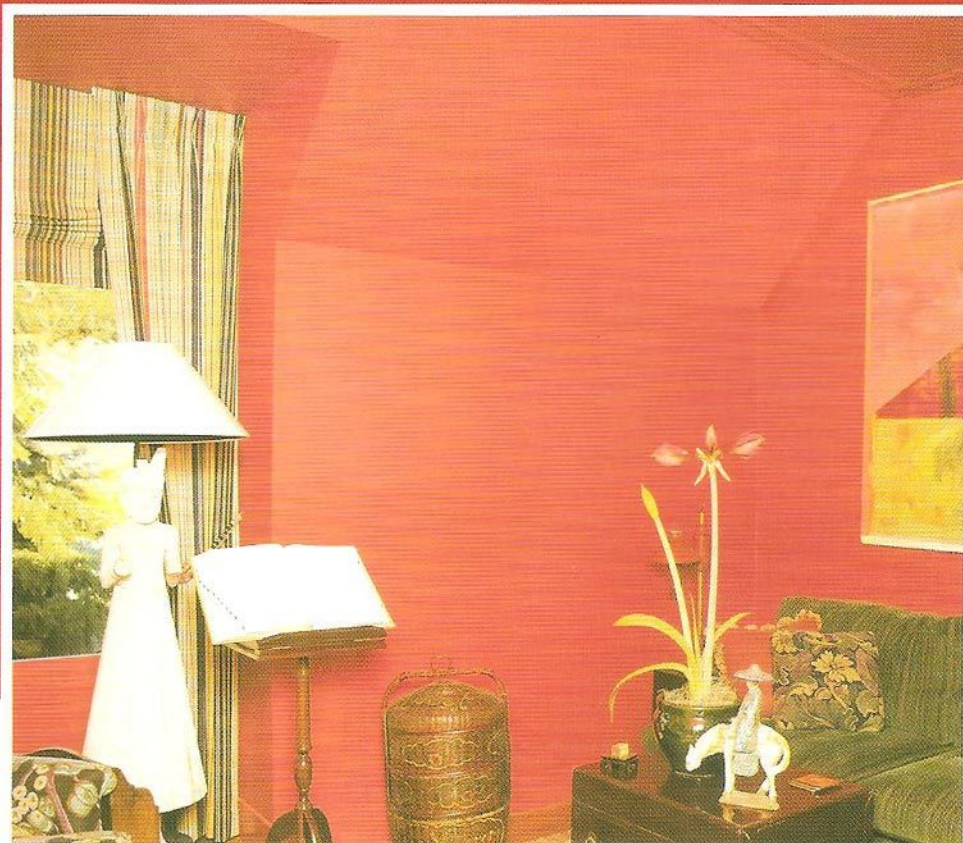


Prevent your expensive

Paints

**from cracking,
flaking and peeling off.**



Use a better alternative to gypsum or acrylic putty for your cement walls.

Play safe with your walls with Ramco Super Fine - a world-class putty



Ramco Super Fine, a cement-based putty, is the perfect match for your cement wall. You can realise the advantages of its homogeneity in the way it readily teams up with your cement wall and the expensive paints that you would like to decorate them with.

The interplay will give your walls world-class paint finish, in any condition. An all-season player, it does not flinch under any weather condition. It is thermal insensitive. There is no thermal expansion due to heat, nor is there any contraction due to cold attacks.

Stroke after stroke, Ramco Super Fine scores high on crack resistance, nil flaking & blistering, water resistance and durability. The long-lasting finish that this surprisingly low cost cement-based putty provides will make your wall a real winner.

BENEFITS

- No peeling
- No flaking
- No blistering
- No water logging
- Excellent bonding with surface
- Improved life for paint finishes
- Better surface hardness
- Excellent crack resistance
- Improved breathability

PRODUCT RANGE:

- White
- Beige-White
- Silver variants



FEATURES

- Coverage: 20 sq.ft.(approx.) per kg per coat
- Water ratio: 35-37% by weight
- Compressive strength: >4.5 N/mm²@28days
- Pot life: 2 hours

Suitable for internal & external applications

PACKAGING AND STORAGE

Ramco Super Fine is supplied in 20 / 40 kg bags and has a shelf life of up to 6 months in dry condition.

APPLICATION

- Step 1 : Pour 7 to 7.5 litres water into a mixing bucket
- Step 2 : Pour the contents of the bag into the bucket and stir thoroughly
- Step 3 : Allow the mix to stand for 5 minutes
- Step 4 : Stir thoroughly again and apply. Use of a mechanical mixer will improve the consistency and workability of Ramco Super Fine.

PRECAUTION : Ramco Super Fine is non-hazardous, but due to the cementitious nature, it is advisable to wear a filter mask and protective coating. In case of eye contact, wash copiously with water and if irritation persists seek medical treatment.



In technical collaboration with **m-terc** Germany

Dry Mix Division,
Madras Cements Ltd.,
Auras Corporate Centre,
1st Floor, 98A, Dr. Radhakrishnan Salai,
Myalpure, Chennai - 600 004.
Tel : (044) 2847 2744, Fax : 2847 8676
e-mail : dmp@madrascements.co.in



Contact :
Chennai : Tel - 044 28478666. Mob - 94450 09482 / 3 / 4 / 97.
Madurai : Tel - 0452 2342167. Mob - 94450 09498 / 94450 08190.
Bangalore : Tel - 080 40750000 / 04 05. Mob - 99000 16104 / 05 / 06 / 16.
Cochin : Tel - 0484 2374783. Mob - 94465 77702 / 94460 06299 - 94460 02239.
Hyderabad : Tel - 040 23119271 / 72, Fax : 040 23119273.
Mob - 98499 12321 - 98499 12306.